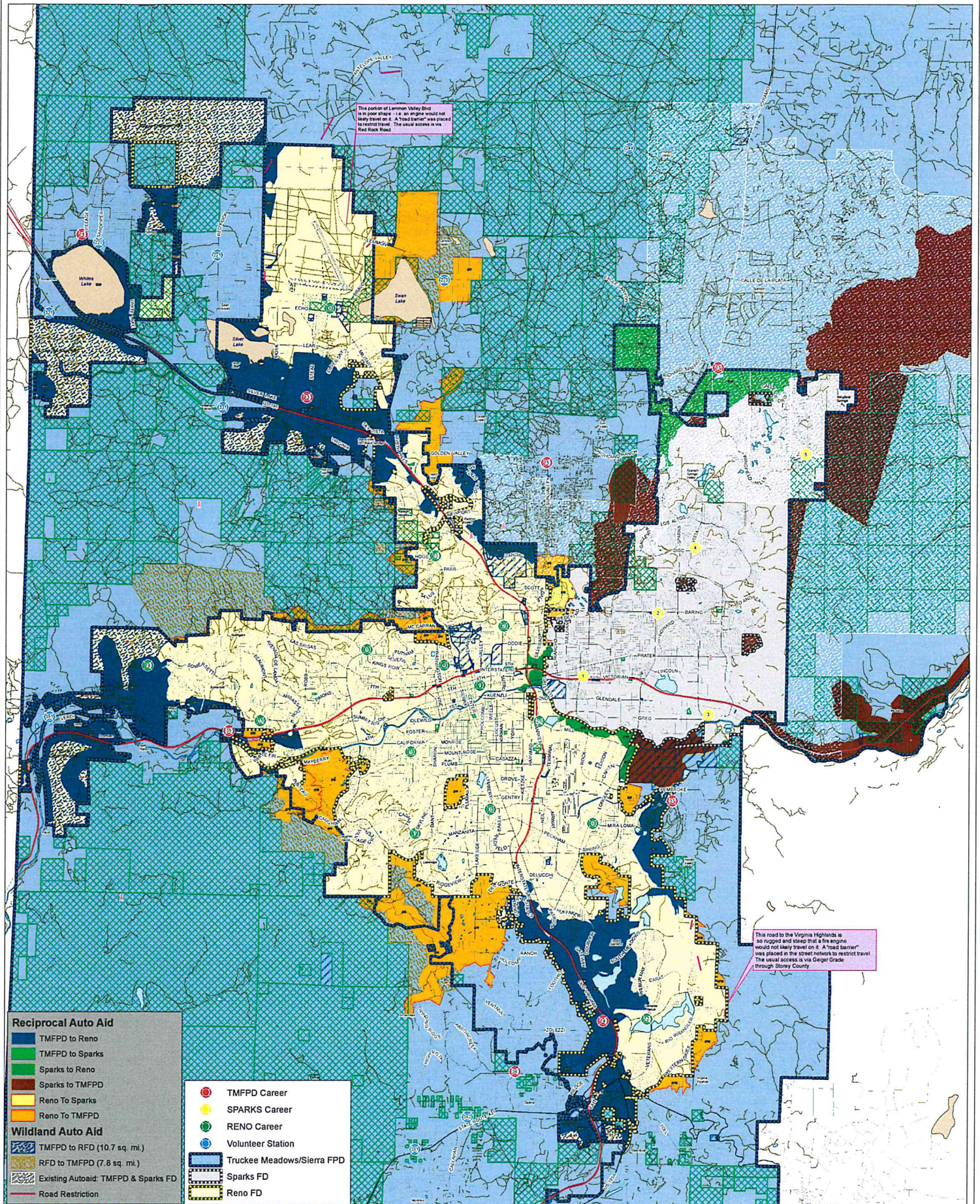


The attached document was submitted to the  
**Washoe County Board of Commissioners** during  
the meeting held on 7-21-15.  
by Chief Moore  
for Agenda Item No. 85  
and included here pursuant to NRS 241.020(7) as  
amended by AB65 of the 2013 Legislative Session.





**Notes:**

This map represents travel time from the various stations to a maximum of 30 minutes. The travel time could be extended to any number of minutes or hours, but the boundary where any 2 fire companies would meet would not change. The difference seen would be the further extension into the outlying areas.

Although dirt roads would provide additional coverage, these are not included in the street network analysis.

800MHz Sites  
Federal Land  
Nevada State Land  
Local Streets  
Dirt Roads  
FREEWAY  
HIGHWAY  
ARTERIAL  
Lake  
Playa

0 1.25 2.5 5  
Miles



Washoe County GIS Program  
Tech. Svcs. Dept/Regional Svcs. Div  
1001 E. 9th St.  
Reno, NV 89512  
[www.washoecounty.us/gis](http://www.washoecounty.us/gis)



Document Path: C:\wilder\mxd\washoe\_2015\washoe\_mxd\STATIONS\_time\_wildlands\_2015.mxd  
Date: 3/27/2015