



# Reno SOI in Verdi

## City of Reno

# Sphere of Influence (SOI) in Verdi

**TMFPD Board of Fire Commissioners**

**February 20, 2018**



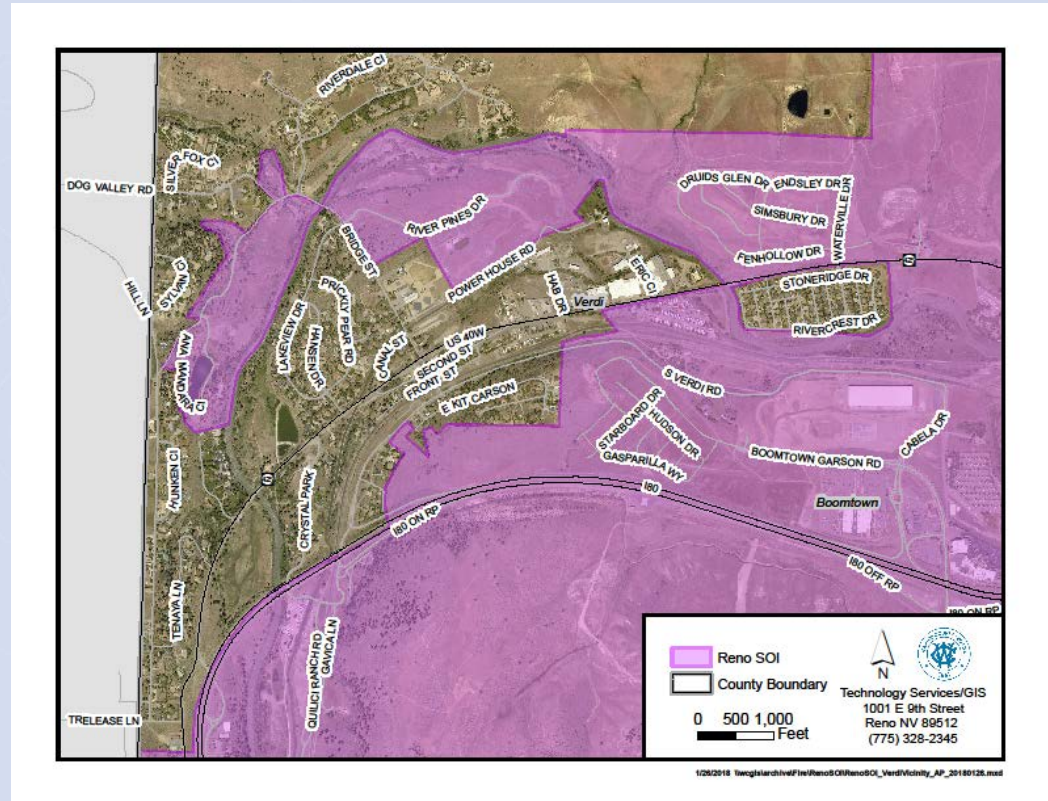
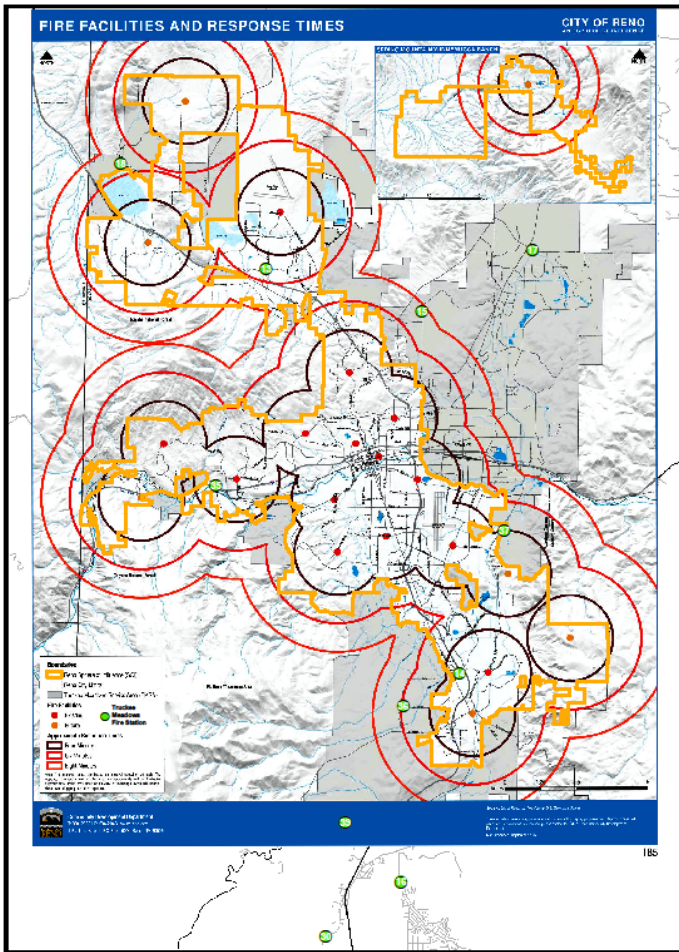
# Reno SOI in Verdi

## City of Reno's SOI in the Verdi area

- Requested during January 20, 2018 meeting
  - Discussion and possible action
- City of Reno's Master Plan
  - Capital outlays for fire stations (see map)
  - Creates peninsula of unincorporated County



# Reno SOI in Verdi



TMFPD Fire Commissioners  
February 20, 2018



# Reno SOI in Verdi

## Spheres of Influence (SOI)

- **Regional Planning tool (enabled by NRS)**
- **Area into which a City will expand**
  - Shown on Truckee Meadows Regional Plan
    - Must be within Truckee Meadows Service Area
    - 20 year time frame
- **City can exercise certain powers within its SOI**
  - Limited to planning & building



# Reno SOI in Verdi

## Annexation

- **NRS envisions annexation within SOI and following seven year annexation program**
- **NRS also enables voluntary (contiguous) annexation**
  - Does not need to be within SOI
  - Does not follow regional form and pattern
  - Frequently creates unincorporated islands



# Reno SOI in Verdi

## **Annexation within and outside of SOI complicates fire service planning**

- **No consultation by City with TMFPD for impacts of fire service provision to new lands**
  - Concern if City cannot provide fire service
- **Patchwork annexation impacts TMFPD funding**
  - TMFPD must still serve islands
  - No TMFPD revenue from annexed lands



# Reno SOI in Verdi

- Concerns with serving peninsula of unincorporated lands in Verdi (see map)**
- Fire and emergency medical must drive through City lands to provide service
  - Same for City for outlying City lands

