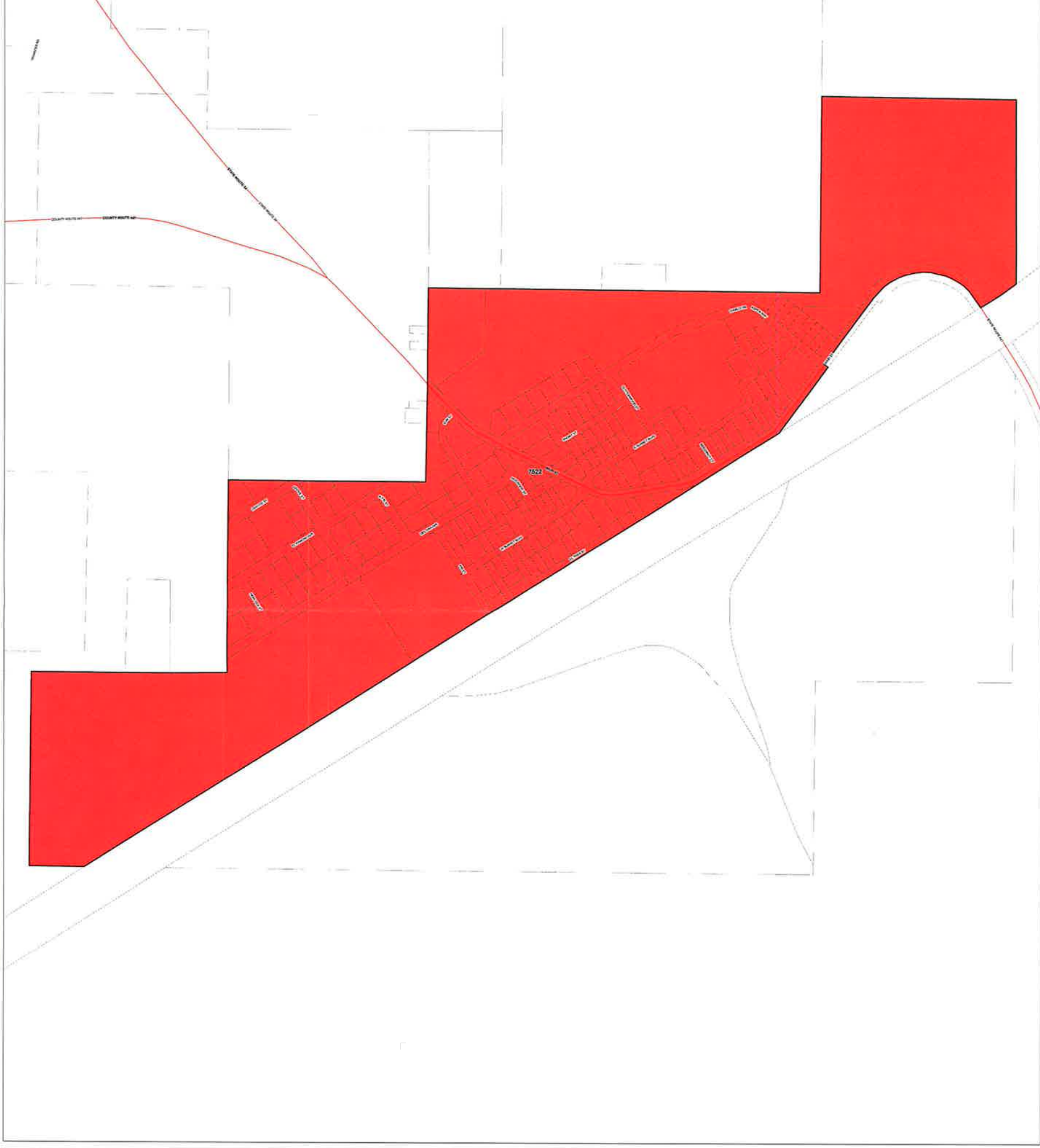





m ss on r District
 District also has Inset Map A
 Author: D. Rudebusch

WASHOE COUNTY
 REGISTRAR OF VOTERS
 1001 E 9TH ST
 BLDG A, ROOM 135A
 RENO, NV 89512
 (775) 328-3670
 Date: 1/24/2018

Washoe County GIS Program
 Technology Services



 Precinct
 Parcel Line
 General Improvement District
 Water

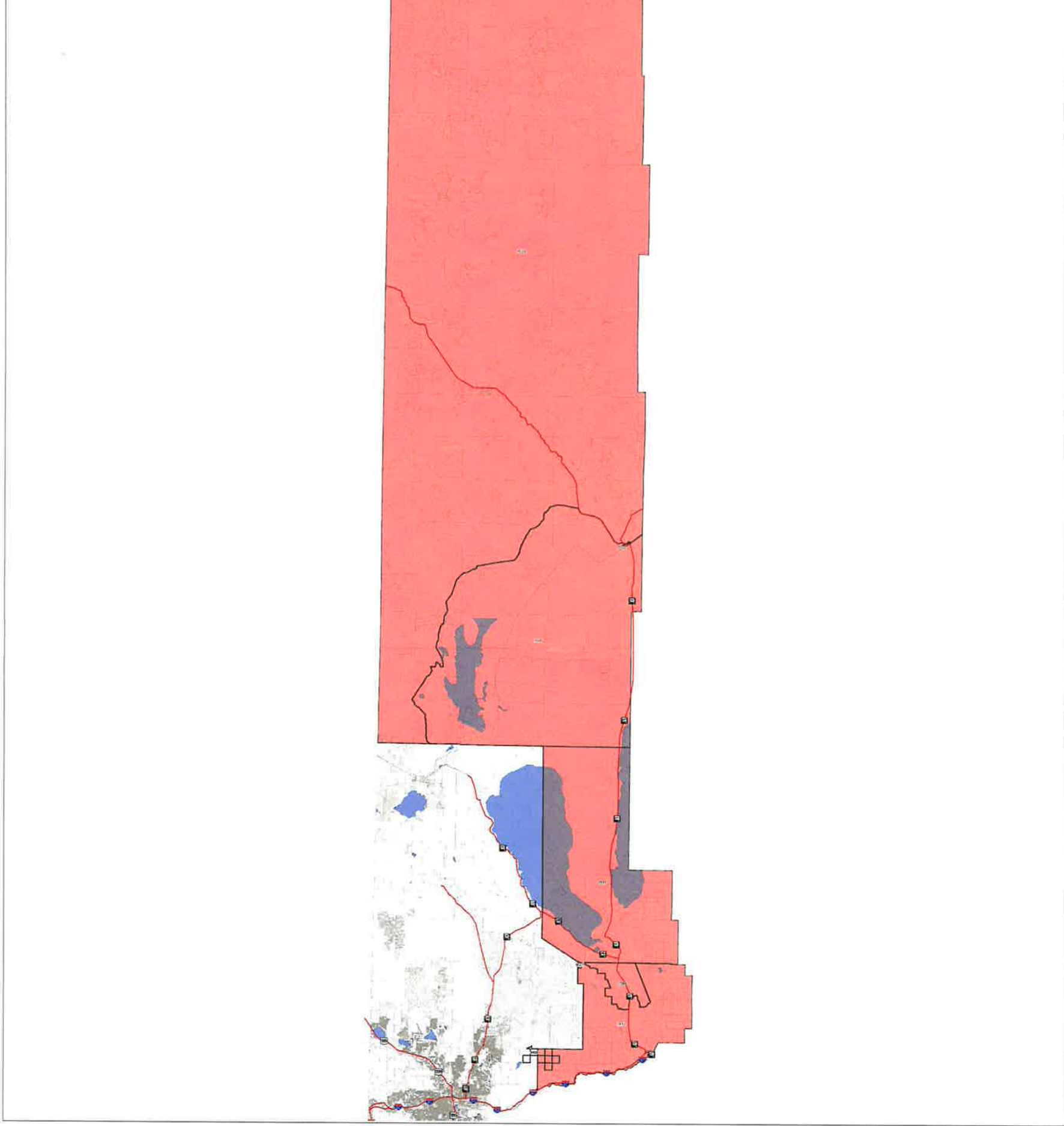
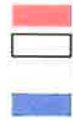
G GI

Washoe County GIS Program
Technology Services

Author: D. Rudebusch

WASHOE COUNTY
REGISTRAR OF VOTERS
1001 E 9TH ST
BLDG A, ROOM 135A
RENO, NV 89512
(775) 328-3670

Date: 1/24/2018



GERLACH-WADSWORTH TOWNSHIP

WASHOE COUNTY
REGISTRAR OF VOTERS
1001 E 9TH ST
BLDG A, ROOM 135A
RENO, NV 89512
(775) 328-3670

Townships
Precincts
Parcel Line
Water

Washoe County GIS Program
Technology Services
Aimee O'Rourke

1:6 Miles

Date: 1/24/2018