

Truckee Meadows Fire Protection District



2019 DEPLOYMENT ANALYSIS

Data Analyzed



Run by Station, Battalion, and Overall

- Annual volume and average number per day
- Calls for service by type and REMSA priority
- Call volume by time of day, day of week
- Proportion of each station's jurisdiction land areas with REMSA response zones
- Proportion of each station's call volume compared to REMSA response zones/times
- Measured call processing, turn out time, travel time by year and call type
- Performance relative to Standards of Cover by call type
- Simultaneous calls
- Frequent fliers
- Arrival on scene in conjunction with REMSA
- Calls for service out of each station's FRD

Dataset



Number of Calls Per Year and Average Number of Calls Per Day

Year	Total #	Average per Day
2015	8,067	22.10
2016	9,381	25.63
2017	10,430	28.58
2018	8,171	26.88
Total	36,049	25.75

Incident Volume By Station/Battalion



Average Number of Calls per Day, by Station, January 2015 through October 2018 Aggregate

Station	Average Number of Calls per Day
30-Bowers (South)	0.58
39-Galena Forest (South)	0.64
32-East Washoe Valley (South)	1.03
40-Verdi/Mogul (North)	1.25
36-Arrowcreek (South)	1.39
37-Hidden Valley (South)	1.56
33-Foothill (South)	1.72
42-Cold Springs (North)	2.24
44-Stead (North)	3.00
46-Spanish Springs (North)	4.97
45-Sun Valley (North)	7.37
South Battalion	6.9
North Battalion	18.8

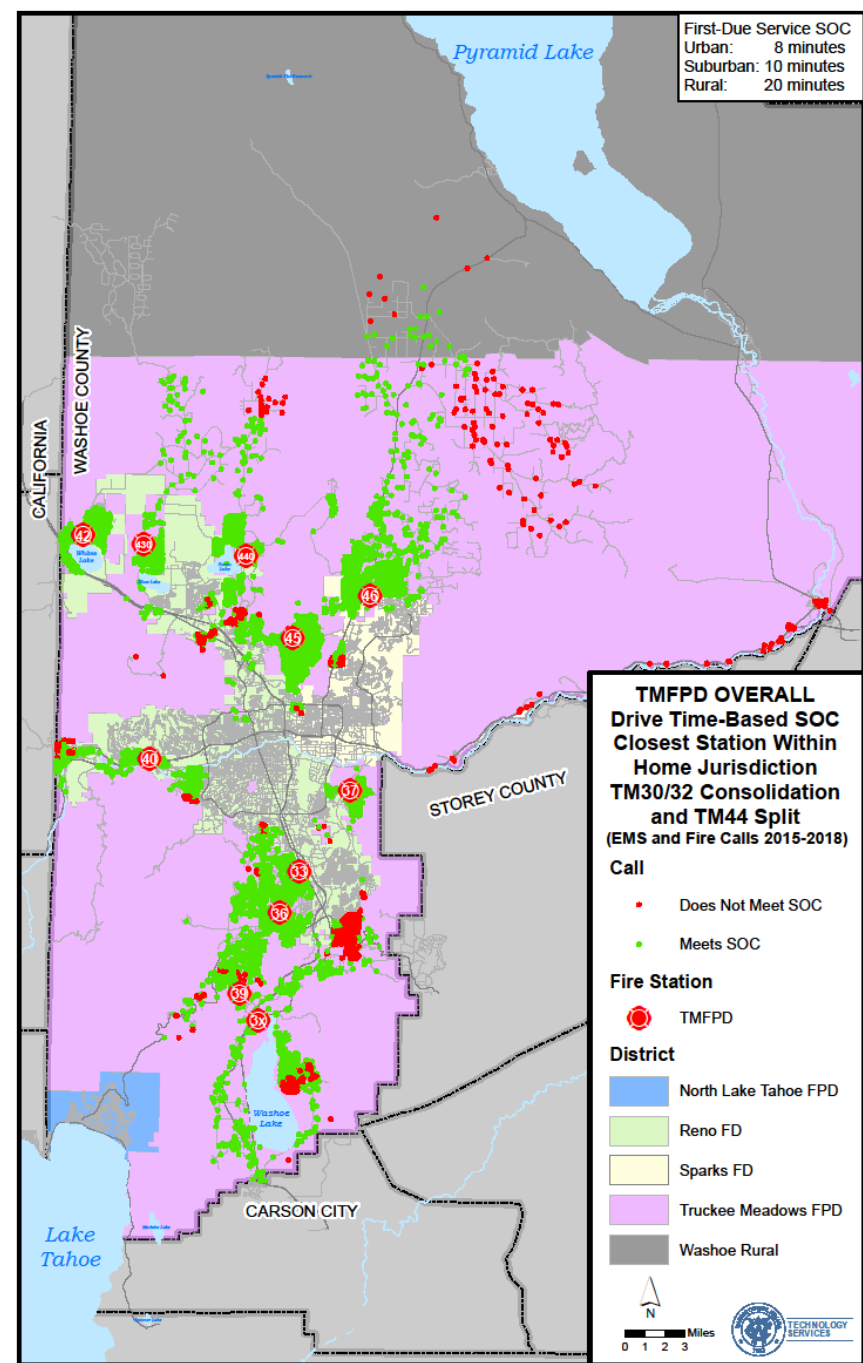
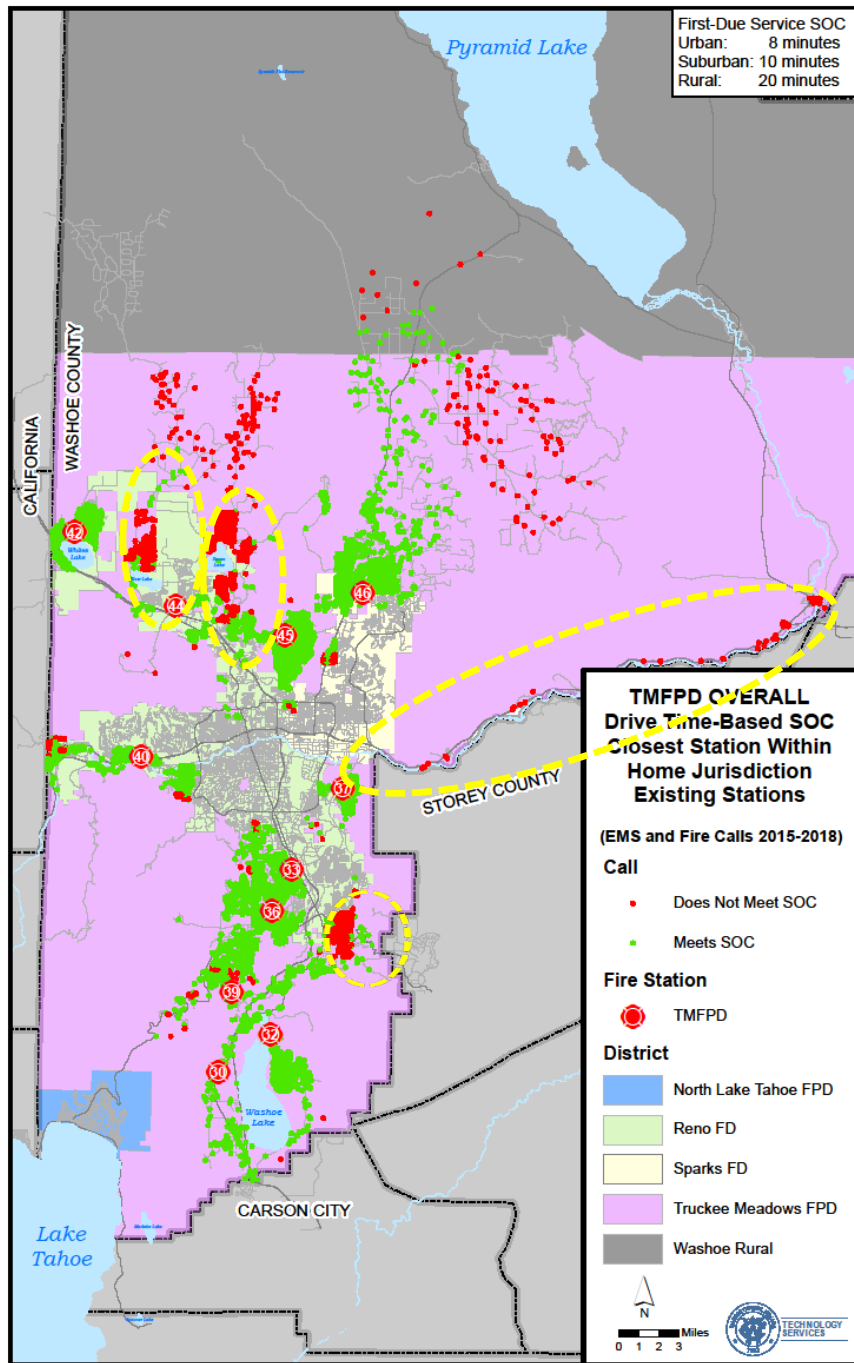
Standard of Cover (SOC)



Board adopted response time standards based on population density and travel times

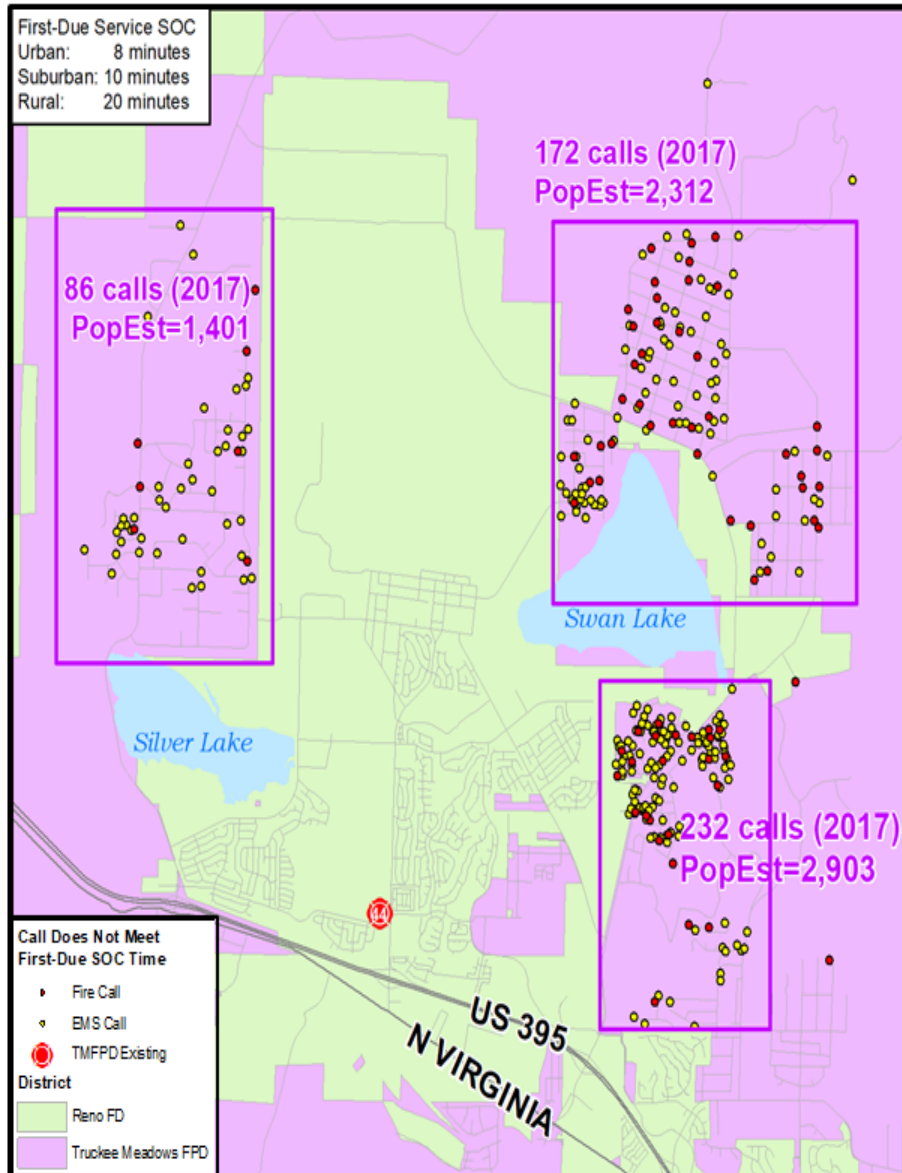
SOC	URBAN	SUBURBAN	RURAL
POPULATION DENSITY	Greater than 2,000 people/square mile	Between 1,000 & 2,000 people/square mile	Less than 1,000 people/square mile
RESPONSE TIME STANDARD	Less than 8 minutes, 85% of the time	Less than 10 minutes, 85% of the time	Less than 20 minutes, 85% of the time





Calls not Meeting SOC Times

Existing TM44 Deployment



Potential TM44 Split

