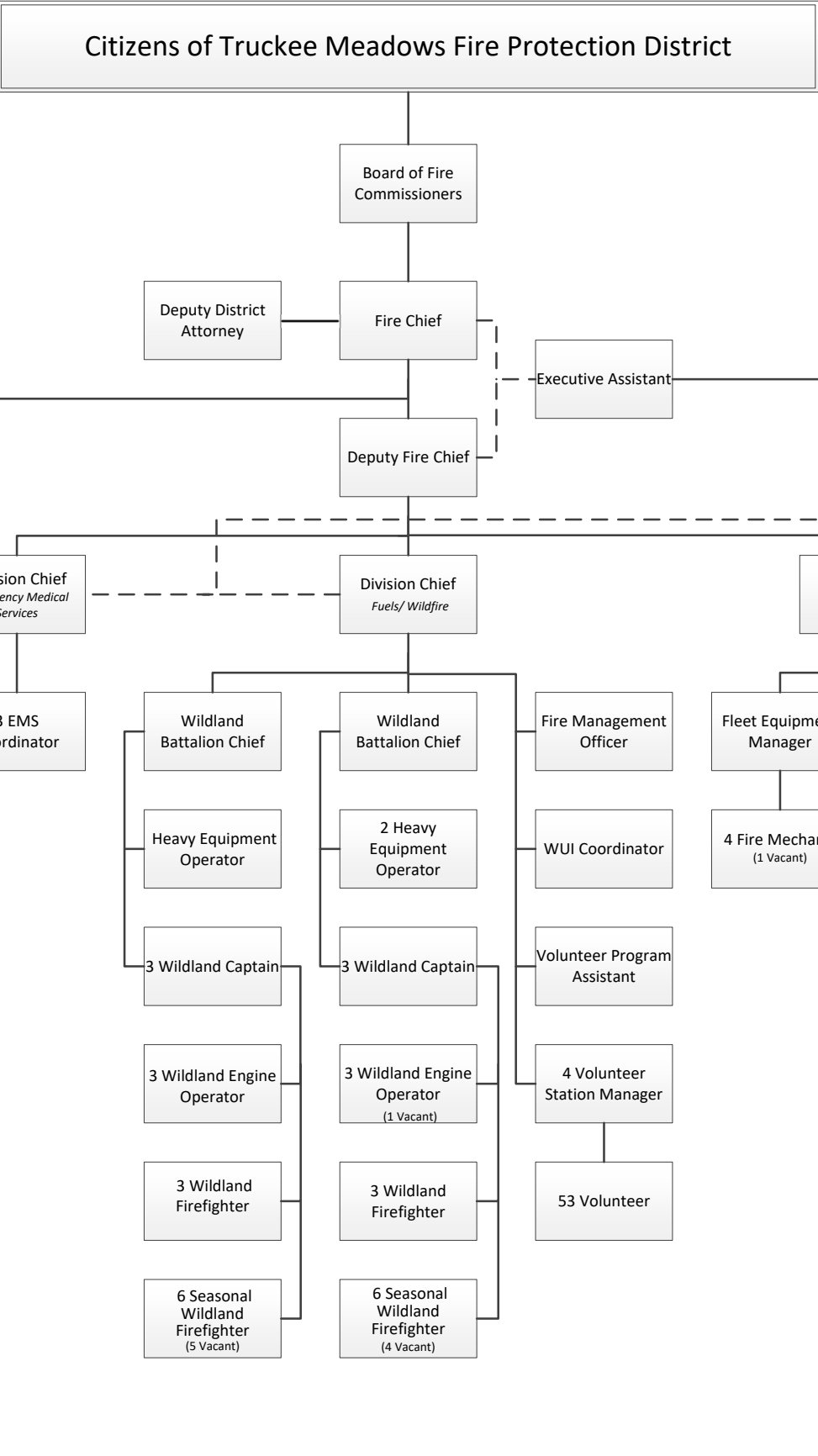




Organizational Chart
01/01/2026



Total Positions: 212
200 Total Full Time and 12 Seasonal Positions
including 18 Full Time and 9 Seasonal Vacancies

Fire Chief – 1
Deputy Chief – 1
Division Chief – 4
Battalion Chief – 7
Fire Captain – 37
Fire Engineer – 33
Firefighter/Paramedic – 68
EMS Coordinator – 3
Wildland Battalion Chief – 2
Wildland Captain – 6
Wildland Firefighter – 6
Seasonal Wildland Firefighter - 12
Wildland Engine Operator - 6
Fire Management Officer – 1
WUI Coordinator – 1
Heavy Equipment Operator – 3
Fire Marshal - 1
Fire Inspector Investigator – 3
Fleet Equipment Manager – 1
Fire Mechanic – 4
Logistics Coordinator – 1
Logistics Supply Specialist – 1
Communications Manager – 1
Chief Fiscal Officer – 1
Accountant – 2
Account Clerk – 1
Executive Assistant – 1
Administrative Support Specialist – 1
Volunteer Program Assistant – 1
Human Resources Manager – 1
Human Resources Support Specialist – 1