



# Water Supply Outlook for Northern Nevada

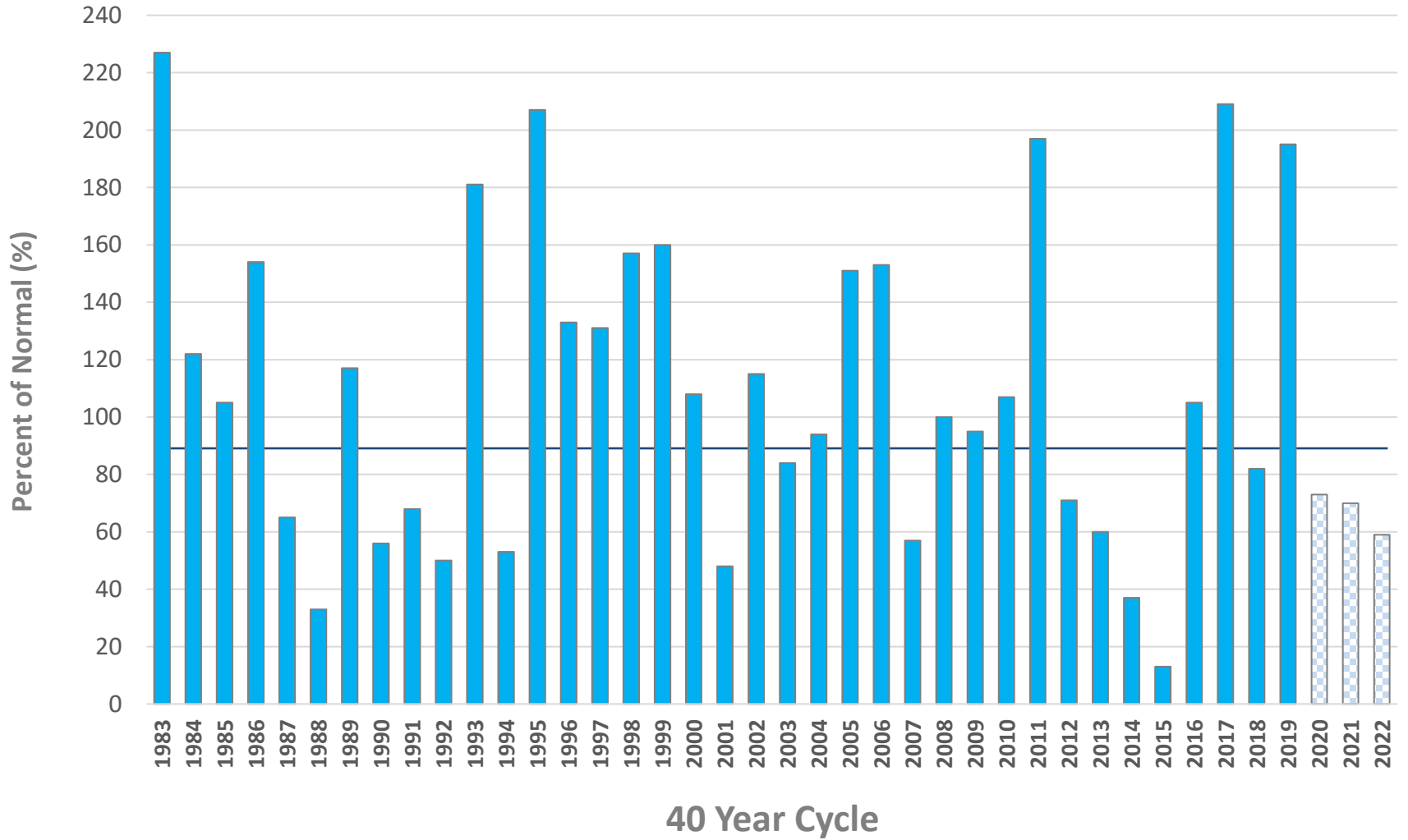
Bill Hauck, Water Supply Supervisor

June 7, 2022

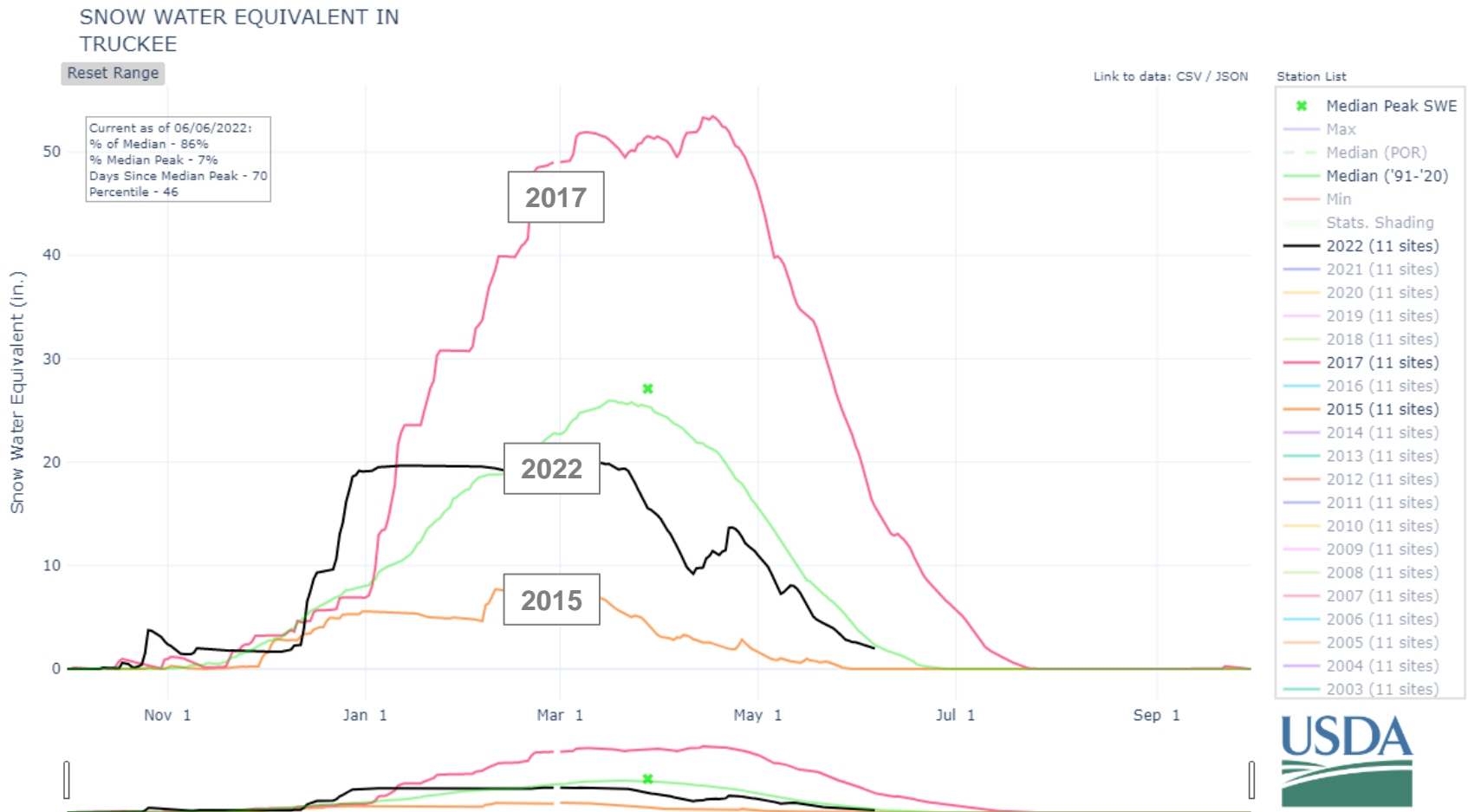
# Key Takeaways 2022

- December 31st snowpack was in excess of 225% of normal
- January-March 2022 ending up being the driest 3-month period on record
- Official NRCS April 01 snowpack measurement for the Truckee River Basin was 60% of normal
- The Truckee Basin got a significant boost in the 2<sup>nd</sup> and 3<sup>rd</sup> weeks of April with some late season winter storms (helping to improve river flow forecasts for later this fall and the *overall* supply outlook)
- Latest model runs project *normal* Truckee River flows into late October and possibly in early November (beyond TMWA's peak demand season)
- Standard conservation protocols in place

# Historical April 1 Truckee River Basin Snowpack



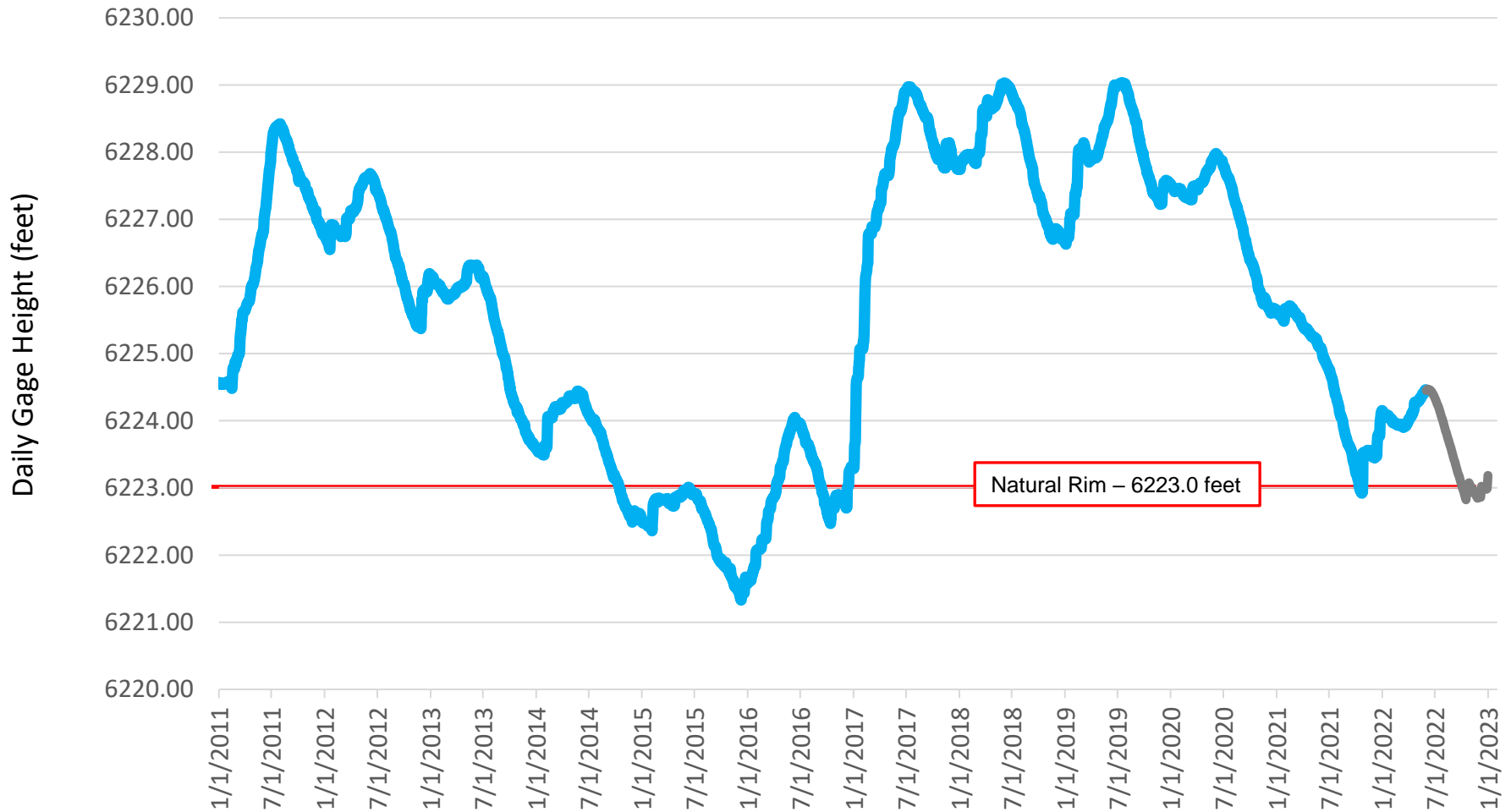
# Truckee Basin Snowpack (06/07/2022)



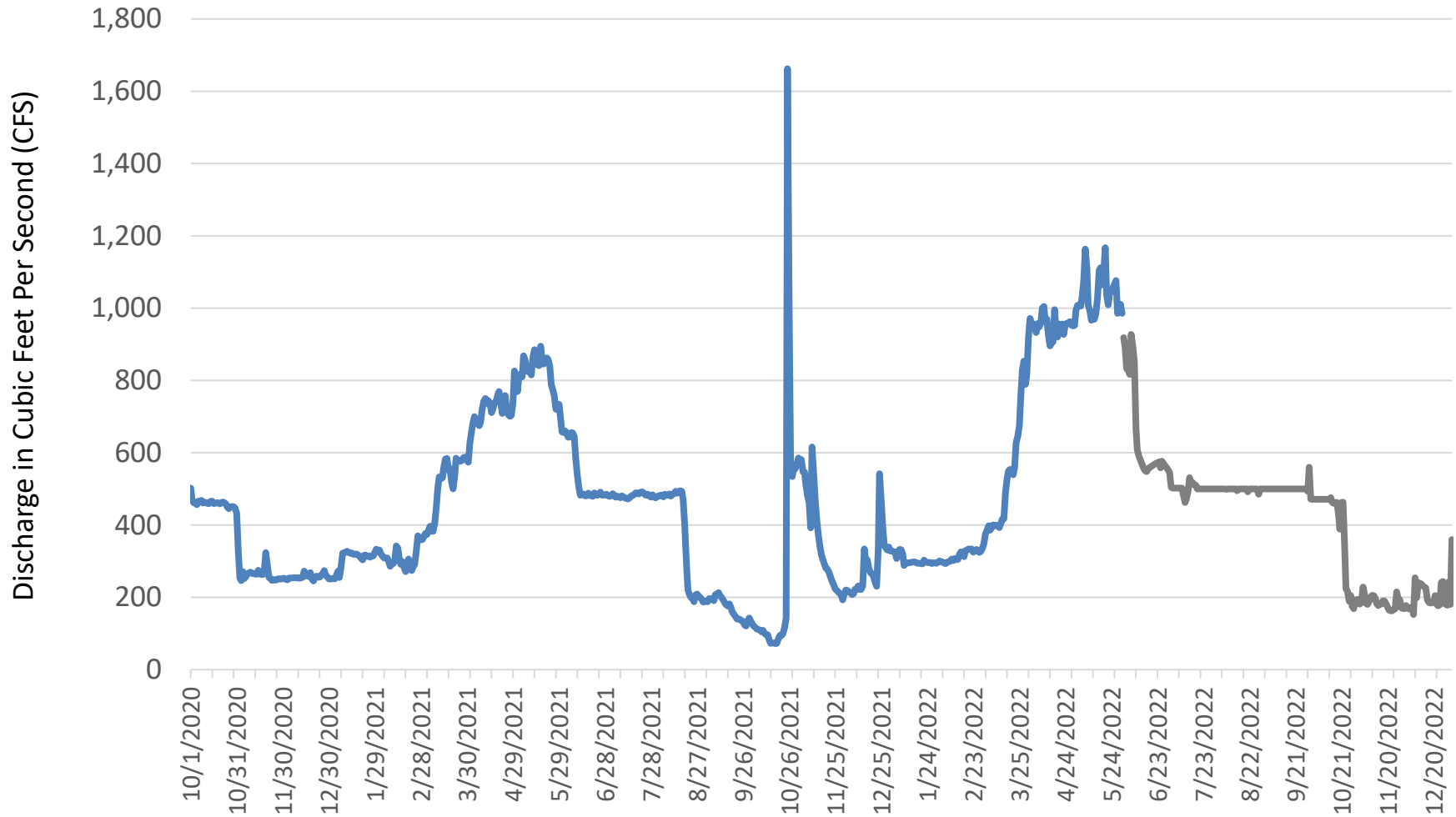
# 2022 NRCS Streamflow Runoff Forecast Summary

	Jan-01	Feb-01	Mar-01	Apr-01	May-21	Jun-21
1. Lake Tahoe (A-H) GCR	160% (1.90')	99% (1.30')	<b>76%</b> (0.90')	<b>46%</b> (0.55')	<b>55%</b> (0.65')	<b>59%</b> (0.70')
2. Truckee River @ Farad (A-J)	164% 370 KAF	116% 260 KAF	80% 180 KAF	56% 125 KAF	67% 150 KAF	82% 184 KAF
3. Projected Day of River Shortages	NA	NA	NA	~9/17	>10/1	>10/23

# Actual and Projected Lake Tahoe Elevation through 2022



# Actual and Projected Truckee River Flow through 2022 @ CA/NV State Line

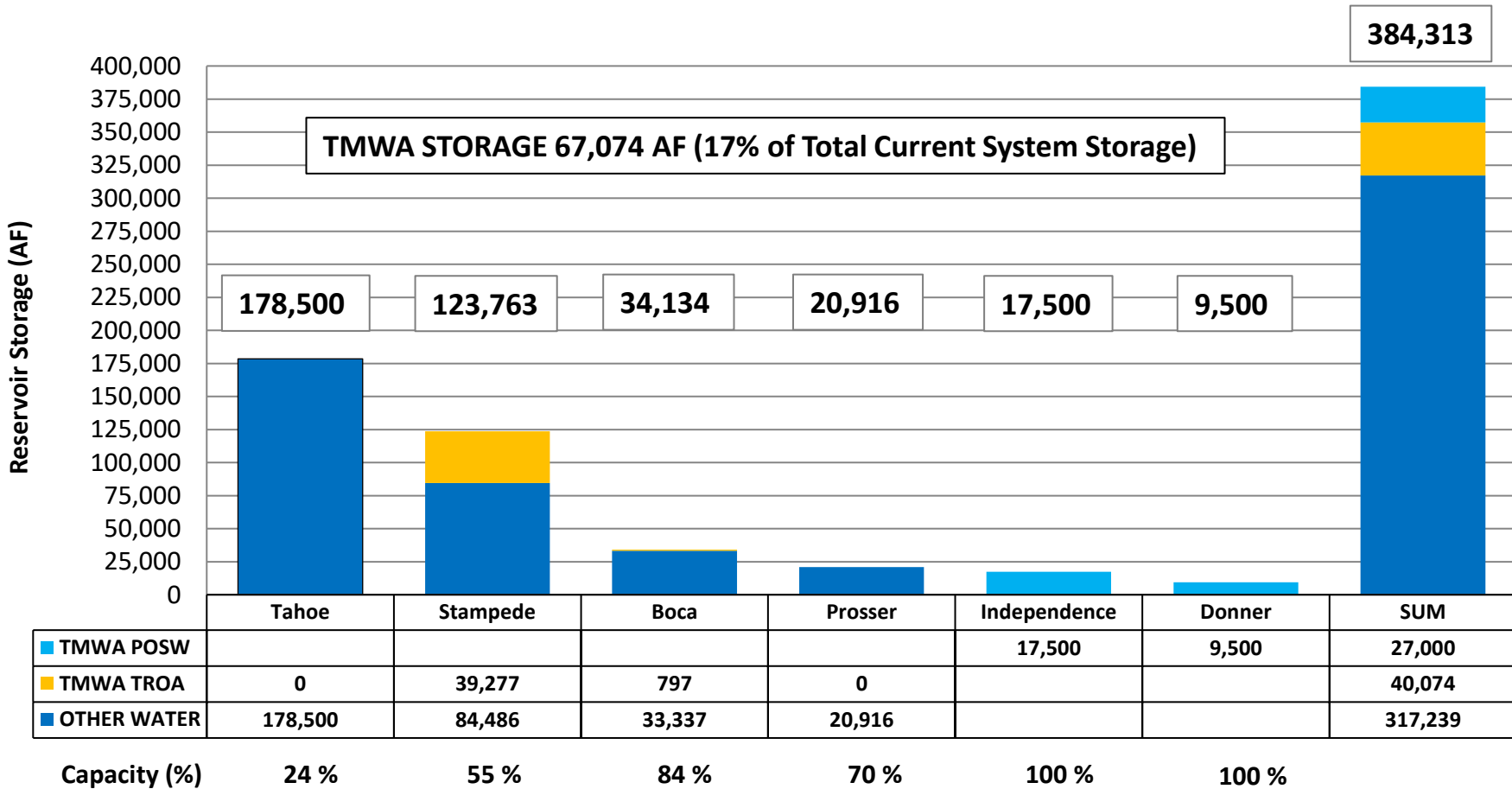


# Truckee River System





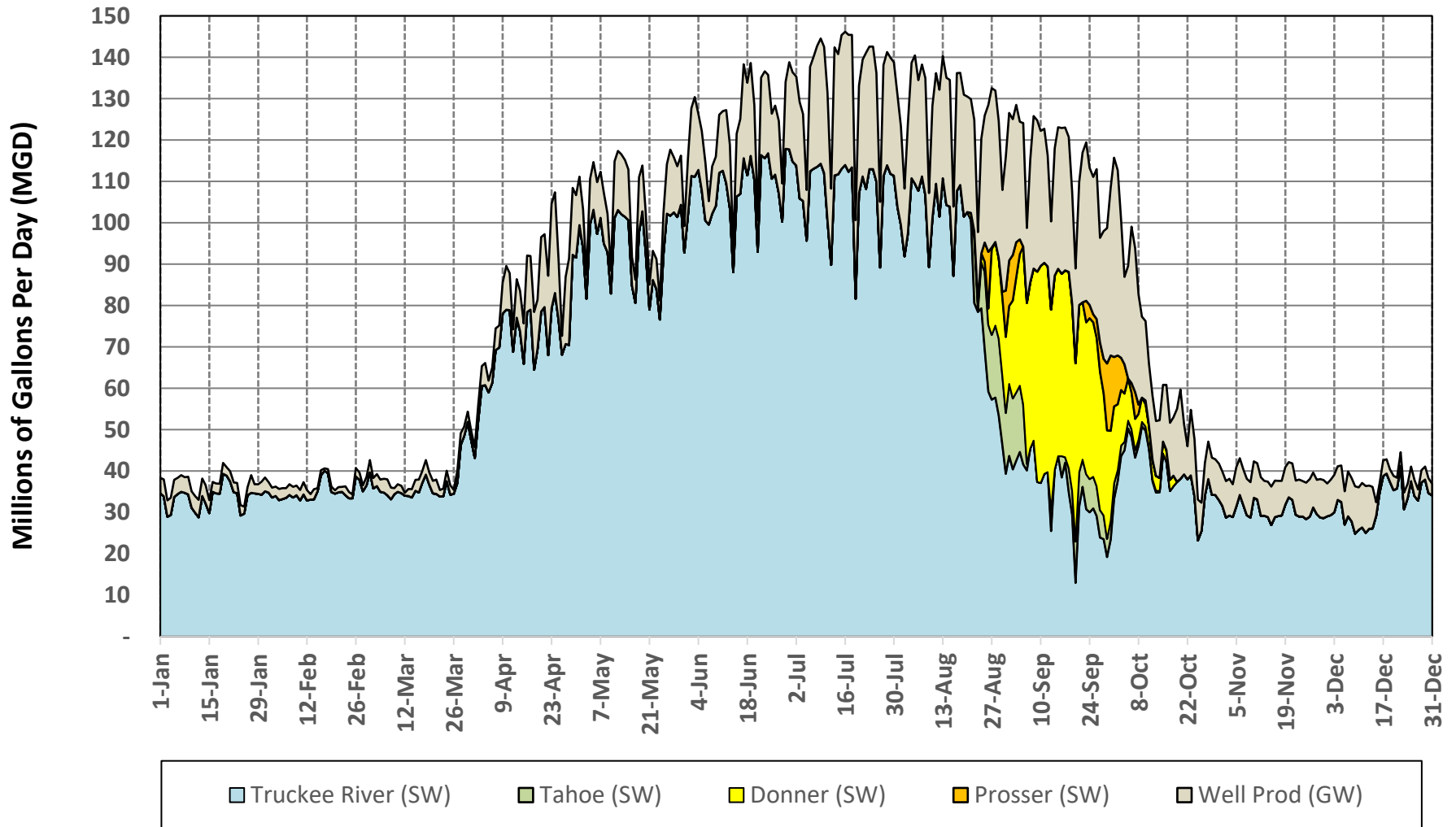
# Truckee River System Storage (6/07/2022)



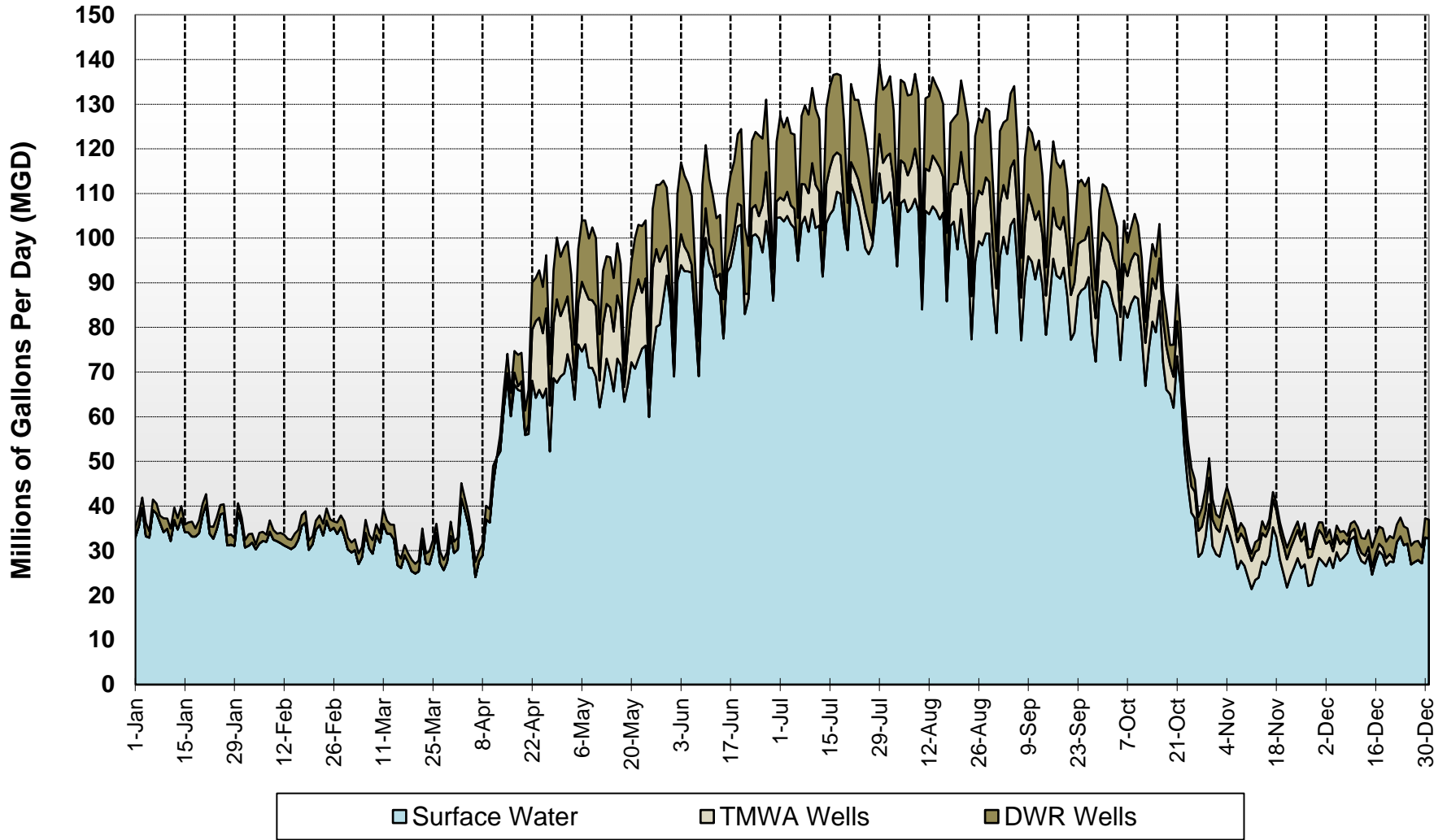
MAX SYSTEM CAPACITY 1,068,270 AF

CURRENT STORAGE 384,313 (32% Capacity)

# 2021 TMWA Actual Sources of Supply



# 2020 TMWA Actual Sources of Supply





# Under TMWA's Ongoing **Water Conservation** initiatives, **Responsible Water Use is *Always* Promoted**

- **Policies are designed to promote water resource sustainability** (and drought resiliency when necessary). To help customers exercise responsible water use, **TMWA employs a suite of demand management programs tailored around the seasonal outdoor watering habits of our customers**
- **Water conservation is an essential component of TMWA's overall water management strategy**, designed to ensure efficient use of our resources under a wide variety of conditions ***every year, regardless of the water supply situation***

# **Standard Water Conservation Practices** are in force per TMWA's Water Efficiency Code and Include:

ASSIGNED-DAY WATERING

## **For Odd Addresses**

(numbers ending in 1, 3, 5, 7 or 9)

RUN SPRINKLERS ONLY ON:

💧 **Wednesdays**

💧 **Fridays**

💧 **Sundays**



ASSIGNED-DAY WATERING

## **For Even Addresses**

(numbers ending in 0, 2, 4, 6 or 8)

RUN SPRINKLERS ONLY ON:

💧 **Tuesdays**

💧 **Thursdays**

💧 **Saturdays**



**NO WATERING ON MONDAYS, PLEASE!**

- ✓ **Standard conservation hours: no-watering between noon - 6 p.m.**
- ✓ **Avoid watering in when it's windy, best to water earlier in the day**
- ✓ **Use only the water you need and avoid landscape run-off.**

# Wrap Up

- Third below *normal* snowpack year in a row (but late season winter storms in mid-April helped to noticeably improve the overall supply outlook)
- No drought storage required this year to meet customer demand
- Standard conservation protocols are in place
- Asking customers to continue to water on their Assigned Days and follow no-watering hours
- TMWA has seen a substantial increase in the amount of upstream storage reserves able to be built up under the terms of TROA and is in great shape as we head into the summer months in what is now the third year of drought

# Thank you!

Questions?

Bill Hauck, Water Supply Supervisor  
Email: [bhauck@tmwa.com](mailto:bhauck@tmwa.com)  
O: (775) 834-8111 M: (775) 250-1333